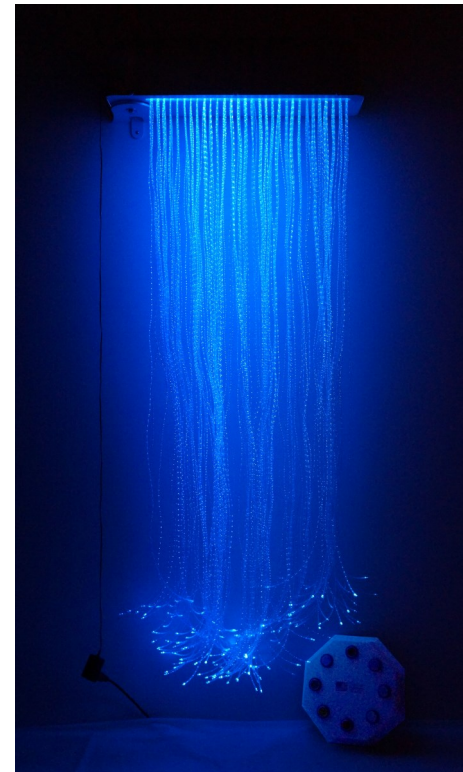




# IRiS LED Fiber Optic Cascade

experia **usa**  
multisensory for everyone



**Congratulations** on the purchase of your IRiS LED Fiber Optic Cascade!

It has been designed specifically for people with special needs and should, if used in accordance with these guidelines, offer years of fun! It comes complete with a IRiS Lightsource which offers IRiS, relaxation and de-escalation opportunities.

Together they offer opportunities to develop numerous skills including color recognition, cause and effect, and many more, as well as IRiS, relaxation and de-escalation opportunities.

It uses our proprietary Fiber Optic Lightsource, currently one of the brightest LED Lightsources currently available and produces multiple shades of colors in IRiS mode. The Cascade also includes our safe, 150 strand fiber optic sideglow harness. There is no electricity present in the fiber optic strands—just light—so it is safe to touch and hold.

Please ensure you read and follow these Instructions carefully before installing or operating the unit. Please keep this manual for future reference.



**WARNING: CHOKING HAZARD**

Small Parts: Not suitable for children under 3 years.



3+ years

Please follow all warnings on the product and within this manual. If upon receipt of this product, the user suspects that the product is defective, and/or requires service or repair due to malfunction or damage to the product, please contact the manufacturer immediately. Please be aware that improper installation and/or use or misuse of this product may result in injury, death, or adverse reactions to its user. Failure to comply with these precautions or with specific warnings elsewhere in this manual violates safety standards of design, manufacture, and intended uses of the product.

### Features

- Hundreds of shades of colors
- No electricity present in fiber optics
- Ergonomic design and light-weight
- Completely silent
- Long life LED technology—no lamp to change...EVER!
- Cool running
- Low voltage transformer supplied
- Durable and easy to use
- 1 Year manufacturers guarantee (collect and return)

### Pack contents

- 1 - Wall bracket (attached)
- 1 - IRiS LED fiber Optic Cascade with 6 ft. Fiber optic sideglow
- 1 - Low voltage transformer
- 3 - 100 lb. wall anchors (drywall)

### Installation

Installation should be done by an experienced competent person only.

The product **MUST** be fixed to a strong, solid wall using the correct fasteners. The fasteners used are dependant on the construction of your wall. The fasteners used should have a minimum rating of 50 lbs. For installation on drywall, we have included three anchors rated at 100 lbs. each. If possible, align at least one of the holes in the bracket with a wall stud (in which case you would substitute an appropriate wood screw in place of the anchor provided). Alternatively, You can install a sheet of plywood (recommended 3/4") to the wall that spans several studs, and then attaching the Cascade to the plywood. Please consult with a qualified installer if necessary.

### Cleaning and Maintenance

The fiber optics should be cleaned at least weekly. Soak the fiber optic strands in the solution and clean with a cloth before rinsing and allow this to dry naturally. ***This may need to be cleaned more frequently depending on the level of usage.*** The Cascade unit itself can simply be dusted occasionally, or wiped with a damp cloth.

The Cascade has been designed for use by people with special needs, however this does NOT mean it is impossible to damage. The Fiber Optic Cascade should be untangled and straightened at least once a week to ensure it is at its optimum condition.

### Troubleshooting

- Make sure the product is plugged in.
- Make sure the original product power supply is being used.
- Make sure that the electrical outlet is getting power.
- Is the product paired with a controller? Please read pairing instructions (insert).
- Call or email us for help.

### Contact Details

For USA please email [info@experia-usa.com](mailto:info@experia-usa.com)

Telephone: (800) 882-4045.

## Manufactured proudly in the USA!

© Copyright 2022, Experia USA, Inc. All rights reserved.

Experia is a registered trademark.

# Safety Precautions

*This product is not designed to have anyone hang from or pull the fiber optic strands with any force. Failure to adequately supervise users could result in the unit being pulled from the wall causing serious injury.*

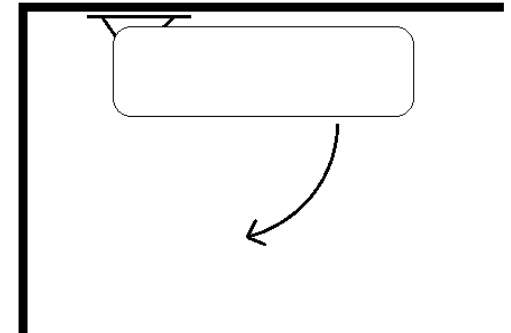
## Fiber Optic Safety

A risk assessment must be completed for each person who is to have access to the Fiber Optics before use. Do not allow the Fiber Optics to be put in a user's mouth under any circumstances.

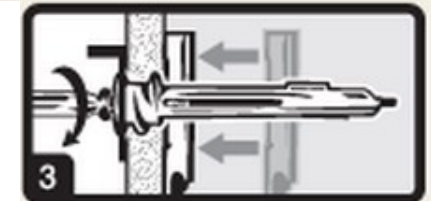
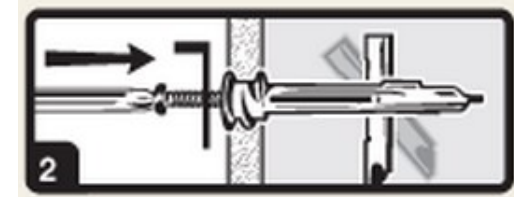
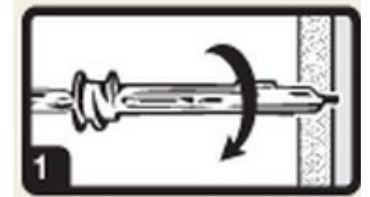
Ensure the person using the Fiber Optics is under constant supervision, and do not allow the Fiber Optics to be put around a person's neck.

*Please note: Only use the transformer supplied. Use of a different transformer may result in damage to the product and void the warranty.*

1. Determine the location that you would like to install the Fiber Optic Cascade. It is designed, preferably, to lay against the wall to the right of the bracket (right).
2. Hold the wall marking template against the wall where you wish to mount the bracket (bottom hole at least 76" from floor).



3. Level the marking template, then mark the holes through the paper with a sharp object.
4. Using a #2 Phillips screwdriver and **WITHOUT** the anchor screw installed, press the anchor tip slightly into drywall (1) and, while applying pressure, turn anchor until flush with drywall (2). **Make sure the arrows on head of anchor point up and down.** Do not overtighten. Repeat on each mark.
5. With a helper, hold the Cascade up to the anchors. Put a flat washer on each anchor screw, then insert through the bracket hole. You may need to tap the end of the screw with the end of the screwdriver to get the toggle to "flip" and align properly.
6. Tighten the screw until it is attached firmly(3). This step pulls the toggle up against the drywall. There is some play in the mounting holes, so you may need to do a quick visual to make sure the Cascade is level before final tightening.
7. Plug the low voltage transformer into the socket on the back of the white cover, and then into a nearby 110v AC outlet.
8. Your Cascade is now ready for pairing. Please follow the instructions



for pairing on the included insert. Once paired, your product will illuminate and will respond to the input of your chosen controller, or “Talker”.

## Pairing Your Cascade to IRiS Talkers

**All IRiS Products, when plugged in, scroll through a number of colors and then turn off. This is normal, and it is how the product initiates itself. It is then looking for a signal from a controller to respond to. Each IRiS product stays paired to the last controller that was used with it. If you prefer on any given day to NOT use a controller, simply press the red pairing button and then DO NOT activate any controller. After 3 seconds, the IRiS product will enter “calming” mode and simply scroll through colors independently.**

This procedure is split into 2 sections, one for those who do not have an IRiS Master Pairer and for those who do.

Every IRiS Listener, such as your Cascade, has a button on it called a pairing button. To get the IRiS Fiber Optic Cascade to work with a controller (we call them “Talkers”), first plug it in and then decide *which* IRiS Talker you want to control it with – in this example we use the IRiS Qube but all work in the same manner.

### ***Without a IRiS Master Pairer:***

Press the red pairing button on the side of the Cascade. Then, activate the Qube by turning it over so that a different color is facing up. This has to happen within 3 seconds. The IRiS LED Cascade will now change color every time you turn the Qube if correctly paired. If it does not then repeat the above.

### ***With a IRiS Master Pairer***

***Your Cascade should already be connected to the Master Pairer. If it is not, please read the Master Pairer manual and complete this step.***

Once your Cascade is paired to the Master Pairer, the button on the Master Pairer that is “connected” to the Cascade will act as a surrogate for pressing the actual button on the Cascade. In this example, let’s say the button #3 is paired to the Cascade.

Plug in the cascade, and wait for it to cycle through it’s colors. Now, press button #3 on your Master Pairer. Then, activate the Qube by turning it over so that a different color is facing up. This has to happen within 3 seconds. The IRiS LED Cascade will now change color every time you turn the Qube if correctly paired. If it does not then repeat the above.

*Continued....*